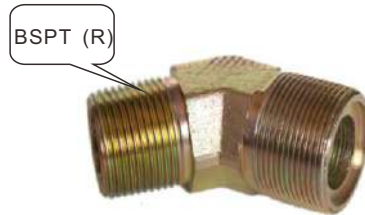
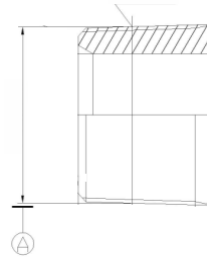


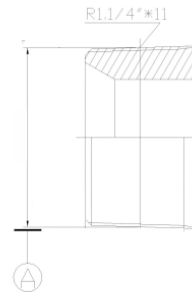
# Thread knowledge



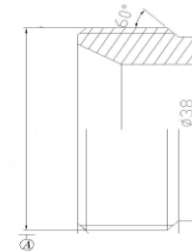
NPT



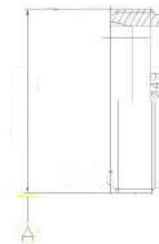
BSPT (R)



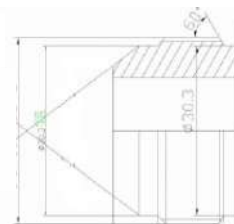
BSP (G)



M



JIC NU



THREAD	DESCRIPTION	STANDARD	TYPICAL CALL OUT	SEALING METHOD	PROPERTIES
<b>BSP</b>	British standard pipe	EN ISO 228-1	G1	<ul style="list-style-type: none"> <li>Parallel thread</li> <li>Pressure tight joint is obtained with a seal or o-ring</li> </ul>	<ul style="list-style-type: none"> <li>55° degree thread angle</li> <li>Truncation of root and crest are round</li> </ul>
<b>BSPT</b>	British standard pipe taper	EN 10226-1 EN 2999-1	R1	<ul style="list-style-type: none"> <li>Conical thread</li> <li>Pressure tight joint is achieved by the thread</li> </ul>	<ul style="list-style-type: none"> <li>55° degree thread angle</li> <li>Truncation of root and crest are round</li> </ul>
<b>NPT</b>	National pipe thread (American standard thread)	AN SI B 1.20.1	NPT1	<ul style="list-style-type: none"> <li>Conical thread</li> <li>Pressure tight joint is achieved by the thread</li> </ul>	<ul style="list-style-type: none"> <li>60° degree round angle</li> <li>Truncation of root and crest are flat</li> </ul>